

Ride the Loop!

The Simcoe County Loop Trail is a 160-kilometre loop that travels through nine municipalities and reaches three major bodies of water, including Georgian Bay, Lake Simcoe and Lake Couchiching. The Simcoe County Loop Trail is primarily on off-road, multi-use rail trails. The route is flat, scenic and available as a multi-day tour.

Type of Bike Required

The Simcoe County Loop Trail is primarily off-road, multi-use rail trail. In most cases, the trail is crushed limestone with some sandy and/or rough sections, depending on the time of year.

We suggest riding:

- Gravel Bike
- Hybrid Bike
- Cyclocross Bike

Can you ride a road bike? Absolutely! But, only if you are an experienced rider. We suggest putting on wider tires for comfort and stability.

Cycling Safety and Etiquette

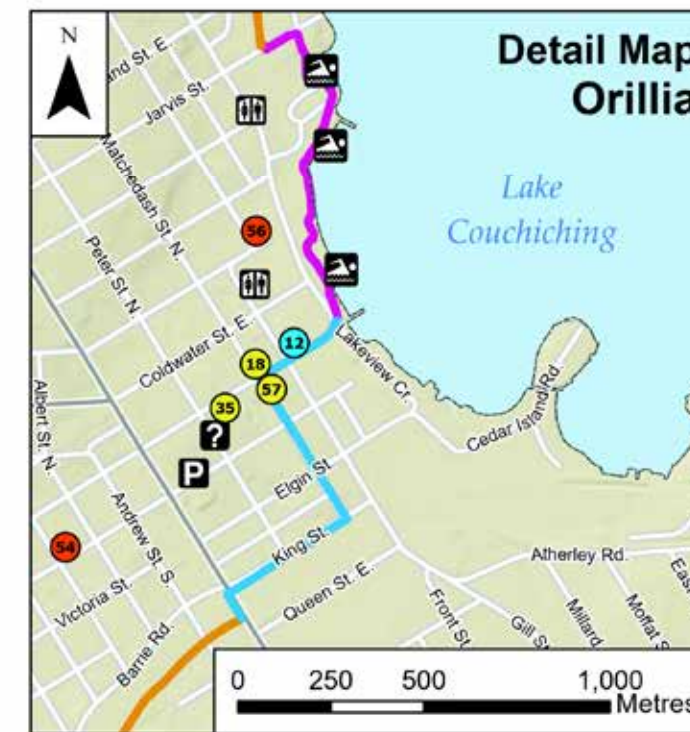
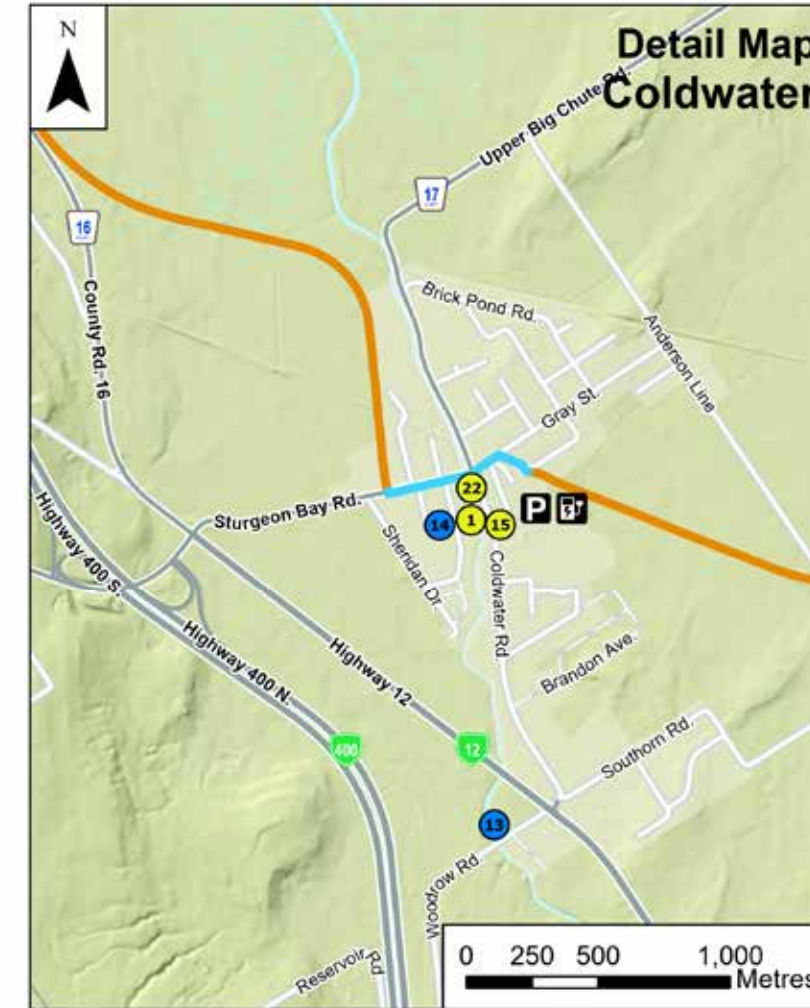
Trail Etiquette

Trails are a wonderful way to spend an enjoyable day. Trail etiquette is important so everyone will have a safe and enjoyable outdoor experience, and trails will be preserved for future generations.

Code of Conduct:

1. Show courtesy to all trail users.
2. Stay on the trail and preserve the natural vegetation and private property.
3. Obey all posted signs and warnings.
4. If you stop, do not block the trail.
5. Pedestrians always have the right of way.
6. Ride defensively and in control.
7. Pass on the left when overtaking others and sound a warning by bell or voice.
8. Do not litter. Take out what you bring in.
9. A properly fitting helmet is the best protection against injury (required by law for cyclists under 18 years old).
10. Obey all traffic laws as any other legal vehicle under the Highway Traffic Act.
11. When riding on the road, group cyclists ride in tight and controlled formations and as close to the right side of the road as possible. This allows drivers approaching from behind to see the road ahead.

experience SIMCOE COUNTY



Disclaimer

The following map has been printed by Tourism Simcoe County. While every effort has been made to ensure the accuracy of this map, inaccuracies or changes may occur. Tourism Simcoe County, the Barrie Cycling Club and the County of Simcoe are not responsible for any variations from the printed information.

This cycling map has been developed to assist in planning bicycle trips throughout Simcoe County. Users of this cycling map are responsible for their own safety and use these routes and trails at their own risk. Users should consider not only route and trail conditions, but also their level of experience, comfort level riding in traffic, traffic conditions and traffic volume, weather, time of day, and any obstacles, such as construction or potholes, when cycling on any route or trail within Simcoe County. This map is not intended as a guide for children. Cyclists should exercise the same level of caution whether riding on a route designated by this map or any non-designated route.

Tourism Simcoe County, the Barrie Cycling Club, the County of Simcoe and others involved in the design and publication of this map and the cycling routes are not responsible for any loss or damage users may suffer as a result of using this cycling map or the cycling routes. Tourism Simcoe County, Barrie Cycling Club, and their partners do not warrant the safety of any route, highway, road, street, trail or designated cycling route shown on this cycling map.

Waiver: Having read the foregoing material and as a condition of using this cycling map, the users of this cycling map waive, release, and discharge, for themselves and their heirs, executors, administrators, successors and assigns, any rights or claims which the users have or may hereafter have against the directors, officers, employees, owners, volunteers and staff of Tourism Simcoe County, Barrie Cycling Club, the County of Simcoe and other sponsoring businesses and organizations, for any and all damages which may be sustained by the users directly or indirectly in connection with their use of this cycling map or the cycling routes.

Where to Park

- Park and leave your car in Barrie. Overnight parking is limited. Barrie has a parkade on Collier St., which isn't enforced on weekends. Park at own risk.
- Hotels often allow you to leave your car for the duration of your trip if you spend the first night at the hotel.
- GO Train allows bikes during off-peak hours.
- Simcoe County Museum online booking: <https://tinyurl.com/4f94hjr8>

Where to Stay

Simcoe County has a wide selection of designated cycling friendly accommodations, including camping, hotels and B&Bs. Full listing can be found on the map. Overnight locations include:

- Midland, Ontario
- Orillia, Ontario
- Barrie, Ontario

Questions?
Contact Cycle Simcoe for information on the Simcoe County Loop Trail.
www.cyclesimcoe.ca/contact

Printed: 2026

WIN!

A Loop Trail T-shirt

1. Ride the Loop
2. Tag @CycleSimcoe in a social media post
3. Submit the online form on cyclesimcoe.ca to get your shirt and wear with pride!

experience THE LOOP



Distance between cities

Barrie ↔ Orillia – 36km

Orillia ↔ Midland – 55km

Midland ↔ Barrie – 69km

Cycling Friendly Businesses

Accommodation	Attraction	Bike Shop and/or Rental	Campground	Food & Drink
Velocity BikeWerx Mobile Bike Repair				
1 4Age Fine Foods				
2 Awenda Provincial Park				
3 Barrie KOA Holiday				
4 Bass Lake Provincial Park				
5 Bell Falls Family Campground				
6 Best Western Plus - Barrie				
7 Best Western Plus Mariposa Inn & Conference Centre				
8 BIKELAND				
9 Boathouse Eatery				
10 Born to Ride Bicycle				
11 Captains Grill Diner				
12 Champlain Waterfront Hotel				
13 Coldwater Canadiana Heritage Museum				
14 Coldwater Heritage Mill				
15 Coldwater Ice Cream				
16 Comfort Inn - Midland				
17 Comfort Inn - Orillia				
18 Couchiching Craft Brewing Co.				
19 Days Inn - Orillia				
20 Dragonfly Dreams Inn B&B				
21 Elmvale Bakery				
22 Em's Cafe				
23 Fairfield by Marriott Inn & Suites				
24 Fern Resort				
25 Flynn's Public House				
26 Four Points by Sheraton Barrie				
27 Georgian Bay Park - Campground				
28 Grounded Coffee Company				
29 Hampton Inn				
30 Hampton Inn & Suites by Hilton Barrie				
31 Hardwood Ski and Bike				
32 Horseshoe Resort				
33 Kings Inn - Midland				
34 Knights Inn - Orillia				
35 Mariposa Market				
36 Martyns' Shrine				
37 MEC Barrie				
38 Midland Inn & Suites				
39 Midland Ski and Bike				
40 Nicholyn Farms				
41 Off Eleven Pizza + Eats				
42 Penetanguishene Centennial Museum & Archives				
43 Quality Inn - Barrie				
44 Quality Inn & Conference Centre - Midland				
45 Quality Inn & Conference Centre - Orillia				
46 Quayle's Brewery				
47 Rawley Resort, Spa & Marina				
48 Residence & Conference Centre Barrie				
49 Sainte-Marie among the Hurons				
50 Simcoe County Museum				
51 Sojourn Outdoors				
52 Stone Gate Inn				
53 Sugar Ridge Retreat Centre				
54 The Bike Stop of Orillia				
55 The Captain's House B & B				
56 The Crank & Sprocket Bicycle Co.				
57 The Lone Wolf Cafe				
58 The Queen's Quay British Pub and Restaurant				
59 Total Sports The Bike Shop				
60 Trek Bicycle Store Barrie				
61 Vetta Spa				
62 Woodfolk Cider				
63 World Famous Dock Lunch				
64 Wye Marsh Wildlife Centre				
Orillia (705) 826-3512				
Coldwater (705) 686-4243				
Tiny (705) 549-2231				
Springwater 1-800-562-7397				
Orillia (705) 326-7054				
Tay (705) 538-2898				
Barrie (705) 721-4848				
Orillia (705) 325-9511				
Barrie (705) 726-7372				
Midland (705) 527-7480				
Barrie 1-855-795-4482				
Severn (705) 619-3467				
Orillia 1-888-224-8921				
Coldwater (705) 955-1930				
Coldwater (705) 686-3072				
Coldwater (705) 330-6601				
Midland (705) 526-2090				
Orillia (705) 327-7744				
Orillia (705) 558-2337				
Ramara (705) 326-8288				
Midland (416) 801-6588				
Elmvale (705) 515-3300				
Coldwater (705) 209-2170				
Orillia (249)-449-0368				
Ramara 1-800-567-3376				
Penetanguishene (705) 355-4782				
Barrie (705) 733-8989				
Tiny (905) 841-5253				
Midland (705) 527-5997				
Midland (705) 540-9425				
Barrie (905) 565-1200				
Oro-Medonte (705) 487-3775				
Barrie (Oro-Medonte) (705) 835-2790				
Midland (705) 526-7744				
Orillia (705) 325-7846				
Orillia (705) 325-8885				
Midland (705) 526-3788				
Barrie (705) 792-4675				
Midland (705) 245-1166				
Midland (705) 526-0202				
Phelpston (705) 737-4498				
Oro-Medonte (705) 487-0603				
Penetanguishene (705) 549-2150				
Barrie (705) 722-3600				
Midland (249) 559-2134				
Orillia (705) 326-7343				
Coldwater (705) 298-0204				
Port Severn (705) 538-2272				
Barrie (705) 722-5190				
Tay (705) 526-7838				
Minesing (705) 728-3721				
Barrie (705) 739-9694				
Orillia 1-877-674-5542				
Wyebridge 1-866-609-1793				
Orillia (705) 325-2453				
Midland (705) 840-3458				
Orillia (705) 259-6333				
Orillia				
Victoria Harbour (705) 534-1211				
Midland (705) 528-0957				
Barrie (705) 733-0027				
Oro-Medonte (705) 835-1500				
Coldwater (705) 798-3208				
Penetanguishene (705) 549-8111				
Midland (705) 526-7809				

Busy road with narrow or no shoulders.

Sandy Section - Ride with caution or use road as alternate

ONLY ONE HOUR NORTH OF TORONTO

Trails

- Off Road - Gravel
- Off Road - Paved
- On Road

Icons:

- E-Bike Charging Station
- Bike Repair Station
- Climb/Descent
- Hospital
- Mountain Biking
- Provincial Park
- Public Beach
- Public Parking
- Public Washroom
- Visitor Information
- Tourist Attraction
- Water Refill Station

0 2.5 5 10 km